

ピアノ

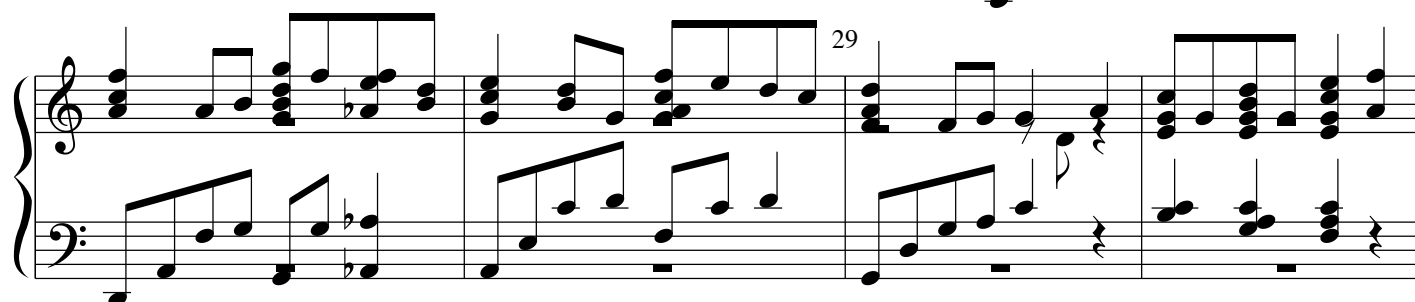
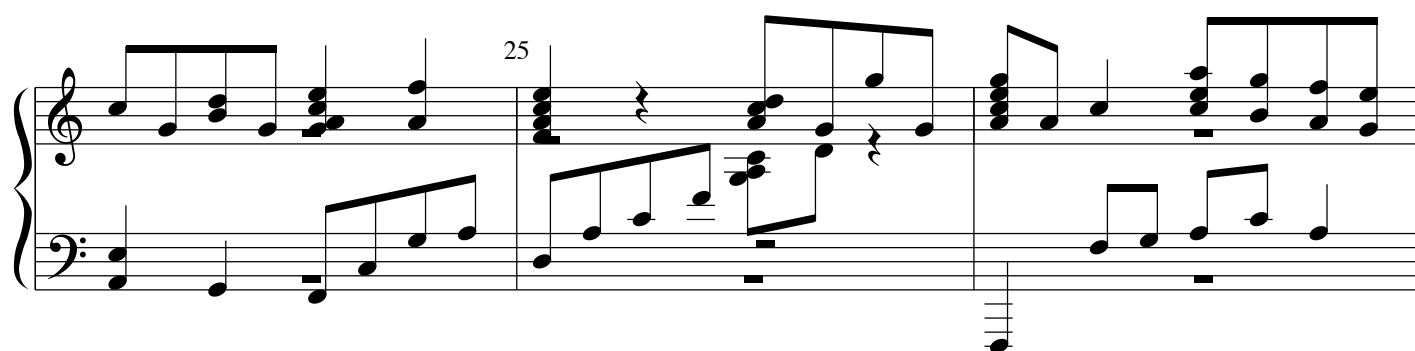
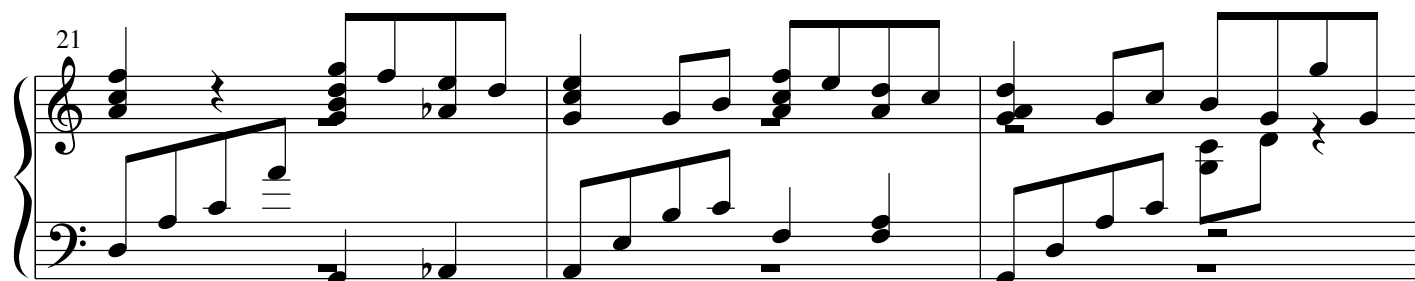
1

5

9

13

17



This image displays a page of musical notation, likely for a piano piece, consisting of six systems of staves. Each system contains a grand staff (treble and bass clefs) with various musical notations including notes, rests, and dynamic markings. The page is numbered 3 in the top right corner. The measures are numbered as follows:

- System 1: Measure 37 is marked at the beginning.
- System 2: Measure 41 is marked at the beginning.
- System 3: Measure 45 is marked at the beginning.
- System 4: Measure 49 is marked at the beginning.
- System 5: Measure 53 is marked at the beginning.

The notation includes various musical symbols such as eighth notes, sixteenth notes, and rests, indicating a complex rhythmic structure. The page is formatted with a clean, professional layout, typical of a printed musical score.

This page of musical notation consists of six systems, each with a treble and bass staff. The key signature has one flat (B-flat). The notation includes various musical symbols such as notes, rests, and dynamic markings. Measure numbers 57, 61, 65, and 69 are indicated at the start of their respective systems.

System 1 (Measures 57-59): The treble staff features a series of chords and single notes, while the bass staff plays a steady eighth-note accompaniment. Measure 57 is marked with a '7' above the staff.

System 2 (Measures 60-62): The treble staff continues with chords and single notes, and the bass staff maintains the eighth-note accompaniment. Measure 60 is marked with a '7' above the staff.

System 3 (Measures 63-65): The treble staff introduces triplet markings over groups of three notes. The bass staff continues with the eighth-note accompaniment. Measure 61 is marked with a '7' above the staff.

System 4 (Measures 66-68): The treble staff features triplet markings and a '65' measure number. The bass staff continues with the eighth-note accompaniment.

System 5 (Measures 69-71): The treble staff features a '69' measure number and a triplet marking. The bass staff continues with the eighth-note accompaniment.

System 6 (Measures 72-74): The treble staff features a '69' measure number and a triplet marking. The bass staff continues with the eighth-note accompaniment.