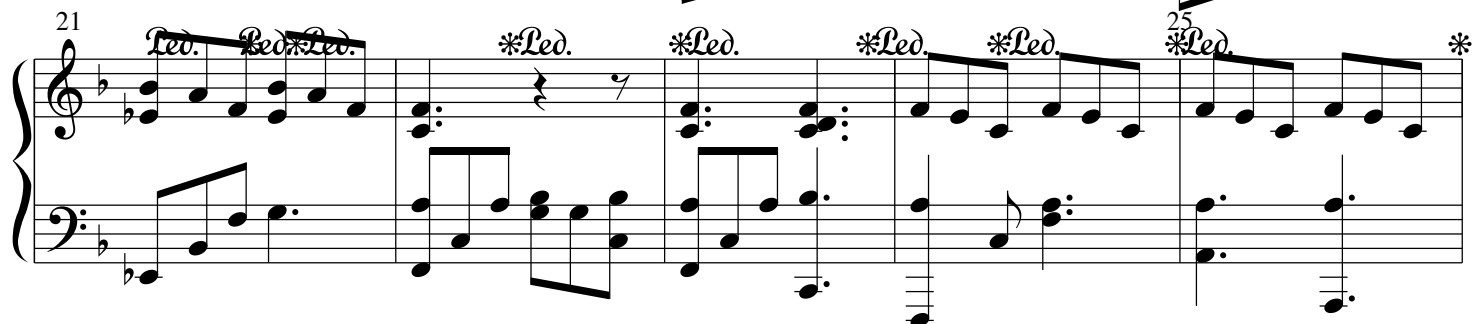
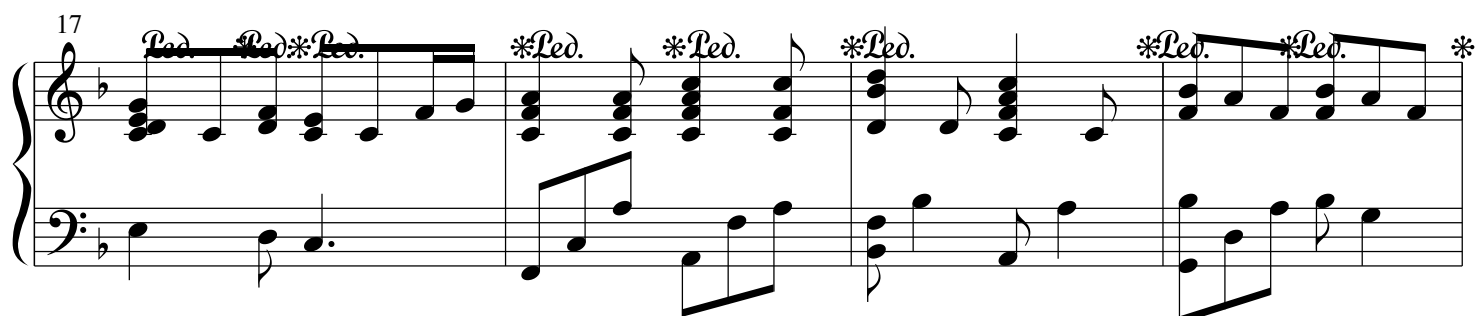
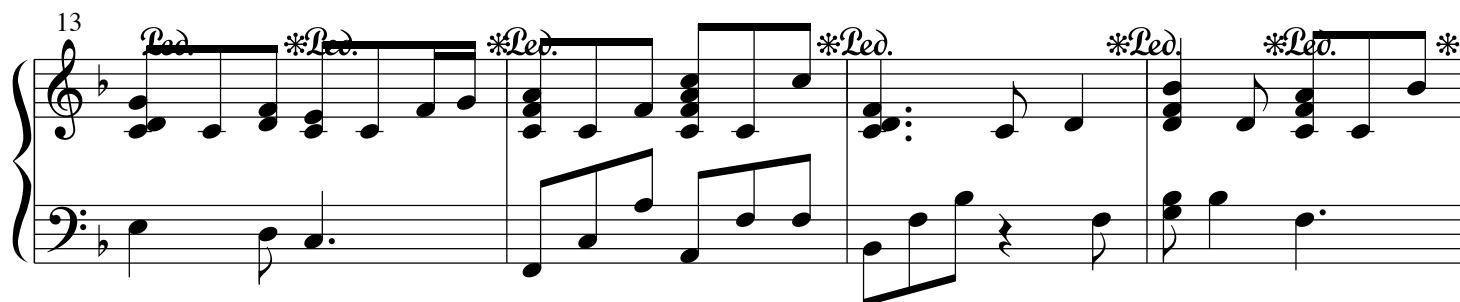
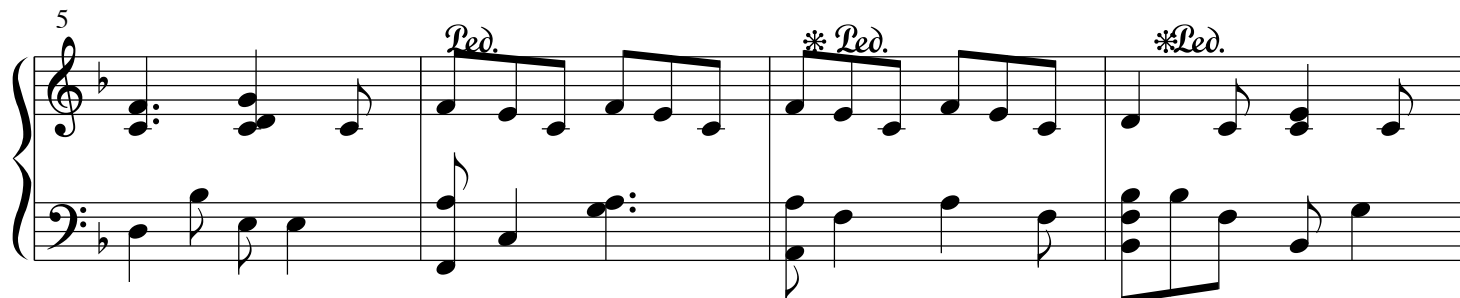
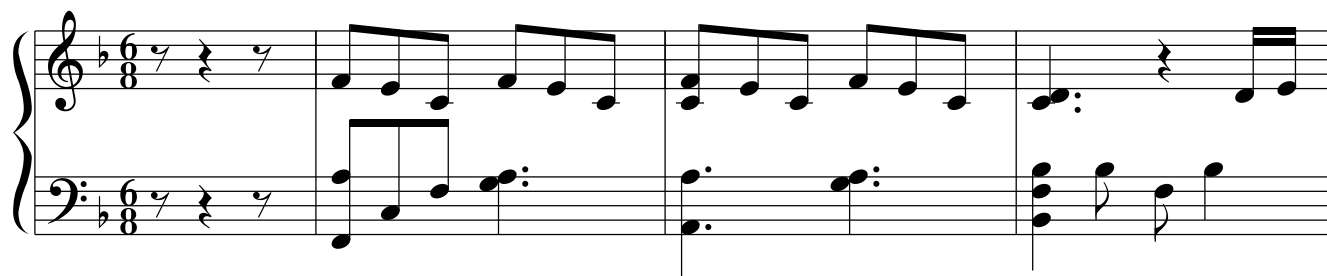


名称未設定

*Led.***Led.**Led.***Led.**Led.***Led.***Led.*

*

Measures 29-32 of a musical score in B-flat major. The right hand features a melodic line with eighth and sixteenth notes, while the left hand provides a bass line with eighth and quarter notes. Measure 32 ends with a repeat sign.

Measures 33-36. Measure 33 is marked with a measure rest and the number 33. Measures 34-36 continue the melodic and bass lines. Measure 36 ends with a repeat sign.

Measures 37-40. Measure 37 is marked with a measure rest and the number 37. Measures 38-40 continue the melodic and bass lines. Measure 40 ends with a repeat sign.

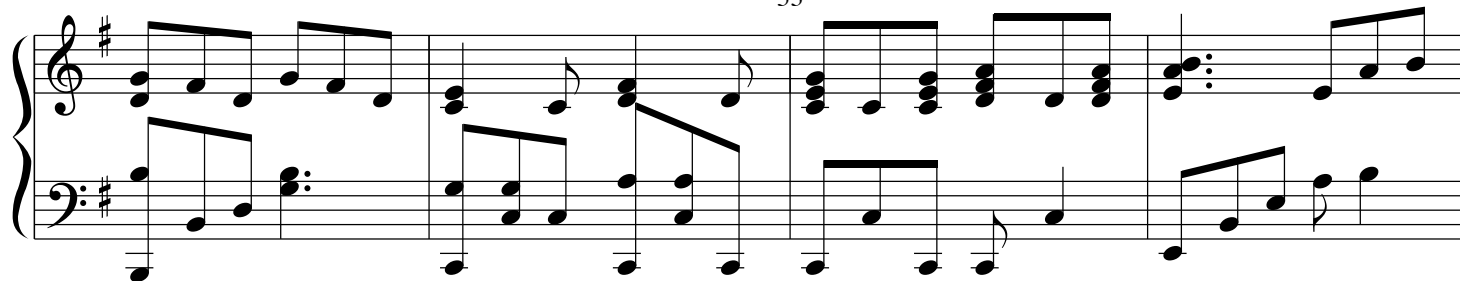
Measures 41-44. Measure 41 is marked with a measure rest and the number 41. Measures 42-44 continue the melodic and bass lines. Measure 44 ends with a repeat sign.

Measures 45-48. Measure 45 is marked with a measure rest and the number 45. Measures 46-48 continue the melodic and bass lines. Measure 48 ends with a repeat sign.

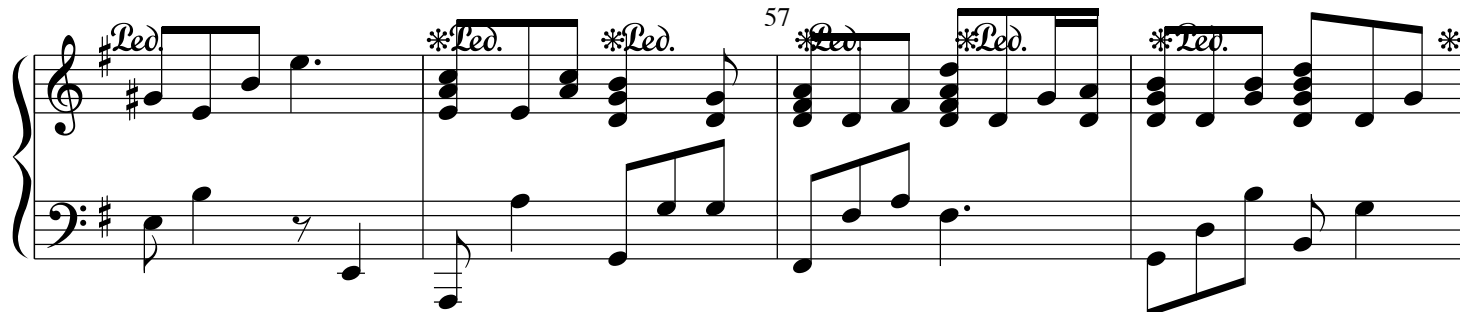
Measures 49-52. Measure 49 is marked with a measure rest and the number 49. Measures 50-52 continue the melodic and bass lines. Measure 52 ends with a repeat sign.

*Led. *Led. *Led. *Led. *Led. *

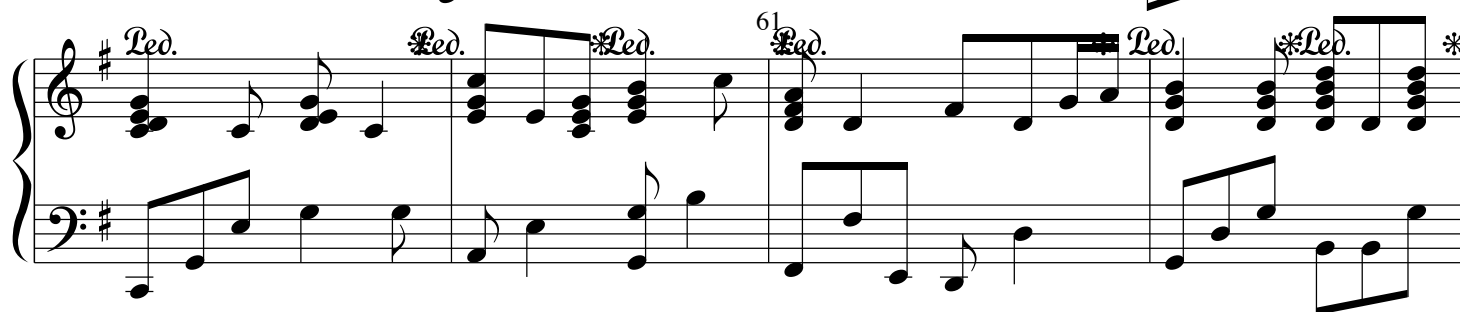
53



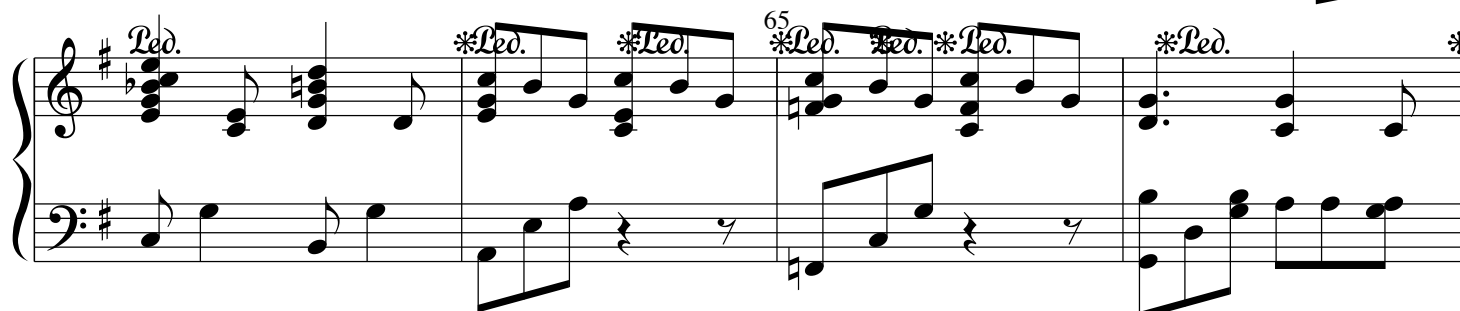
57



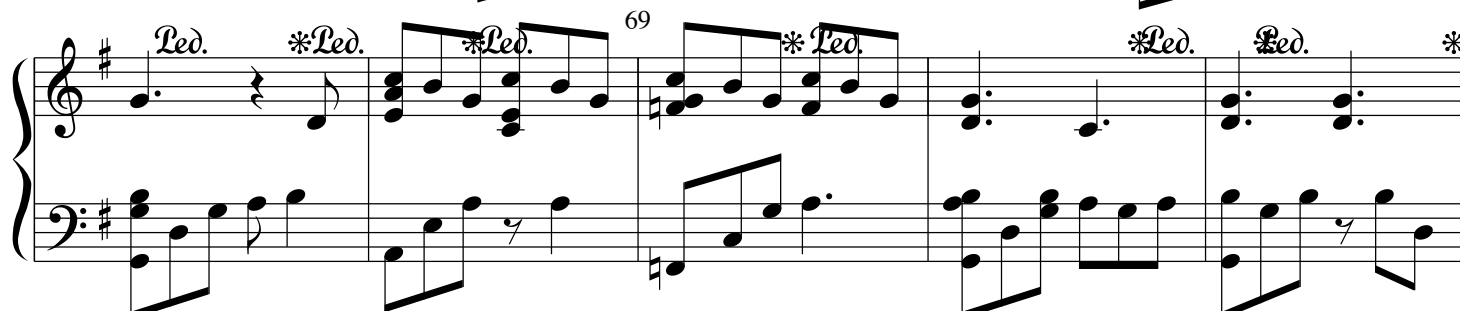
61



65



69



73

**Led.***Led.***Led.*

77

A musical score for measures 77, 78, and 79. The score is written for a grand staff with a treble clef and a bass clef, both with a key signature of one sharp (F#). The time signature is not explicitly shown but is implied to be 4/4. Measure 77 contains a whole rest in both staves. Measure 78 contains a whole rest in both staves. Measure 79 contains a whole note in both staves, with a fermata over the note. The notes are G#4 in the treble and G#3 in the bass.

*