

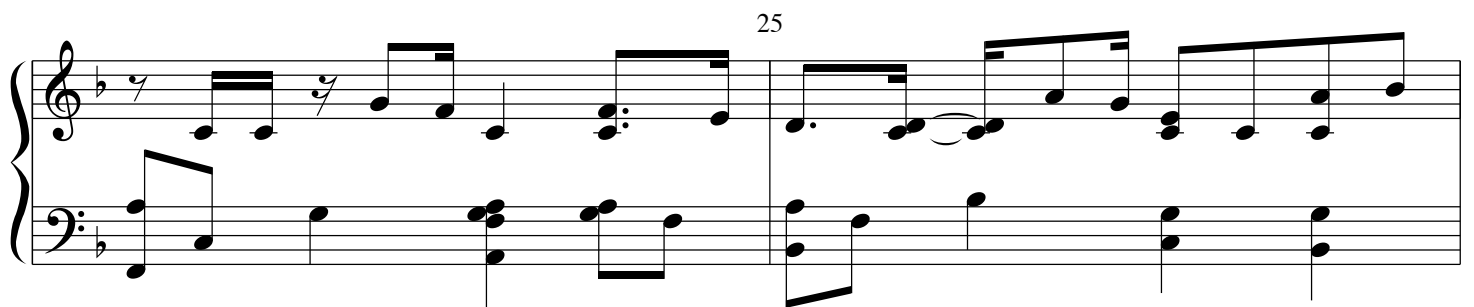
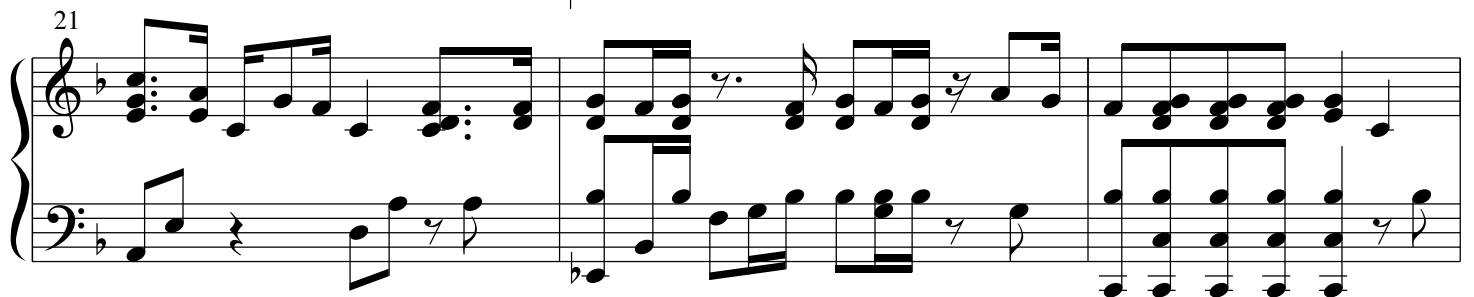
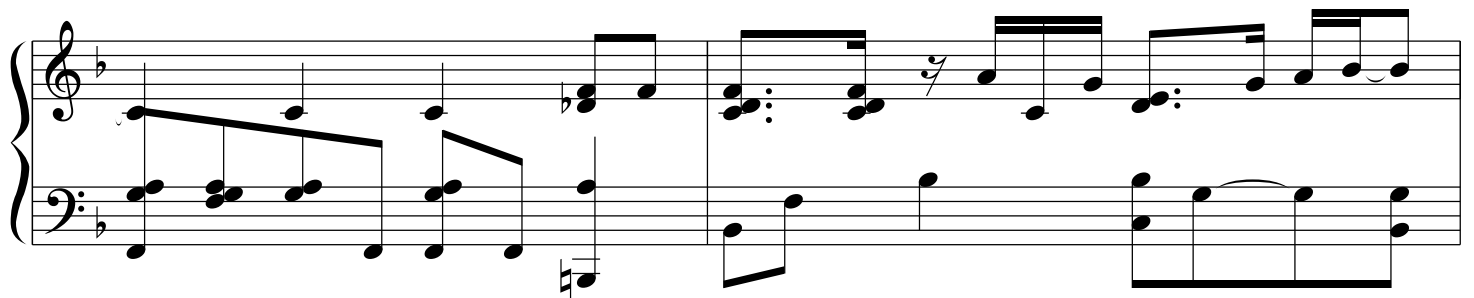
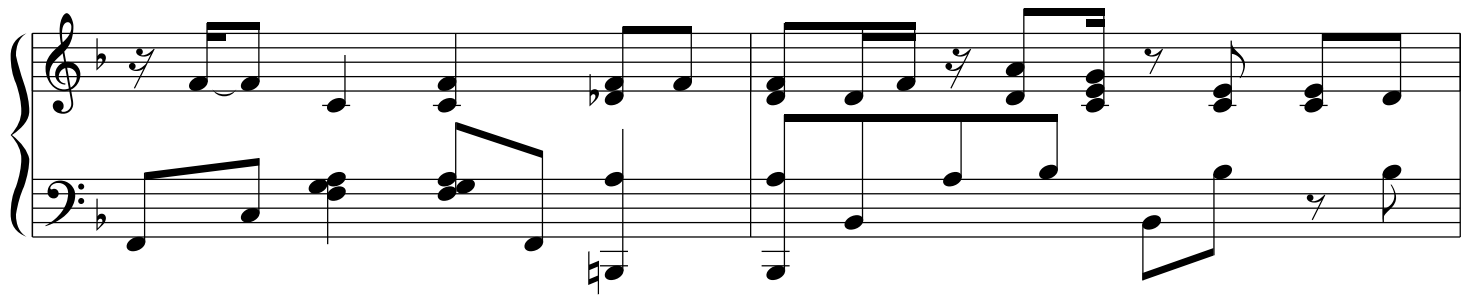
ピアノ

1

5

9

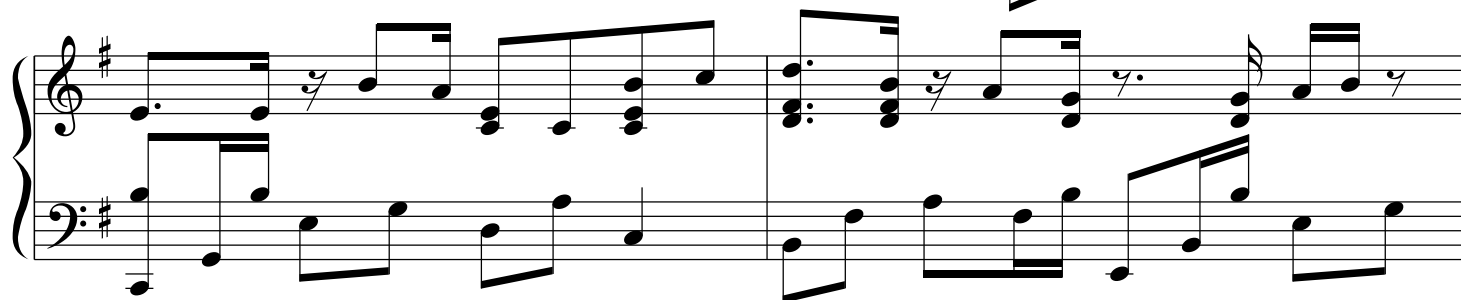
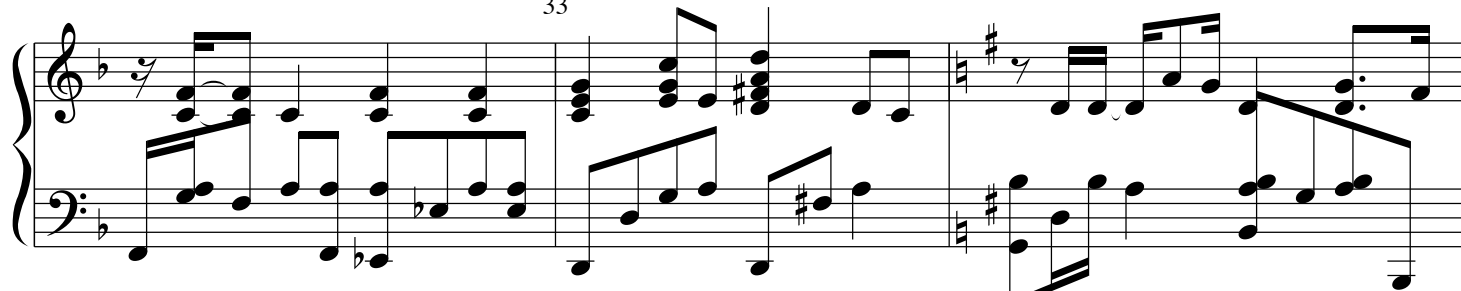
13



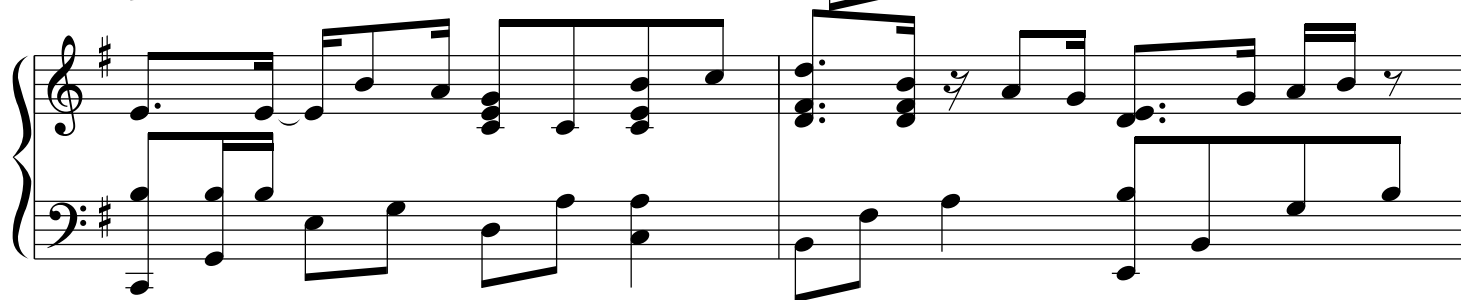
29



33



37



This page of musical notation consists of six systems, each with a grand staff (treble and bass clef). The key signature is G major (one sharp) and the time signature is 3/4. The notation includes various musical elements:

- System 1 (Measures 41-42):** Features eighth and sixteenth notes in the right hand, often beamed together. The left hand plays a steady eighth-note accompaniment. Measure 42 includes a triplet of eighth notes in the right hand.
- System 2 (Measures 43-44):** Continues the melodic and accompanimental patterns. Measure 44 features a triplet of eighth notes in the right hand.
- System 3 (Measures 45-46):** Similar to the previous systems, with eighth-note patterns. Measure 46 includes a triplet of eighth notes in the right hand.
- System 4 (Measures 47-48):** The right hand shows more complex rhythmic patterns, including a triplet of eighth notes in measure 47. Measure 48 features a triplet of eighth notes in the right hand.
- System 5 (Measures 49-50):** Measure 49 includes a triplet of eighth notes in the right hand. Measure 50 features a triplet of eighth notes in the right hand.
- System 6 (Measures 51-52):** The final system on the page, continuing the eighth-note accompaniment and melodic lines. Measure 52 includes a triplet of eighth notes in the right hand.

Dynamic markings include *p* (piano) and *f* (forte) throughout the piece.

53

System 1, measures 53-54. The key signature is one sharp (F#). The right hand features a complex melody with eighth and sixteenth notes, including triplets and rests. The left hand provides a steady bass line with eighth notes.

System 2, measures 55-56. The right hand continues the melodic line with various rhythmic patterns. The left hand maintains the bass line, with some chords in the right hand providing harmonic support.

57

System 3, measures 57-58. The right hand has a more active melody with many sixteenth notes. The left hand's bass line is consistent, with some rests in the right hand.

System 4, measures 59-60. The right hand features a melodic line with some ties and eighth notes. The left hand continues the bass line with eighth notes.

61

System 5, measures 61-62. The right hand has a melodic line with some ties and eighth notes. The left hand continues the bass line with eighth notes.

65

System 6, measures 65-66. The right hand has a melodic line with some ties and eighth notes. The left hand continues the bass line with eighth notes.